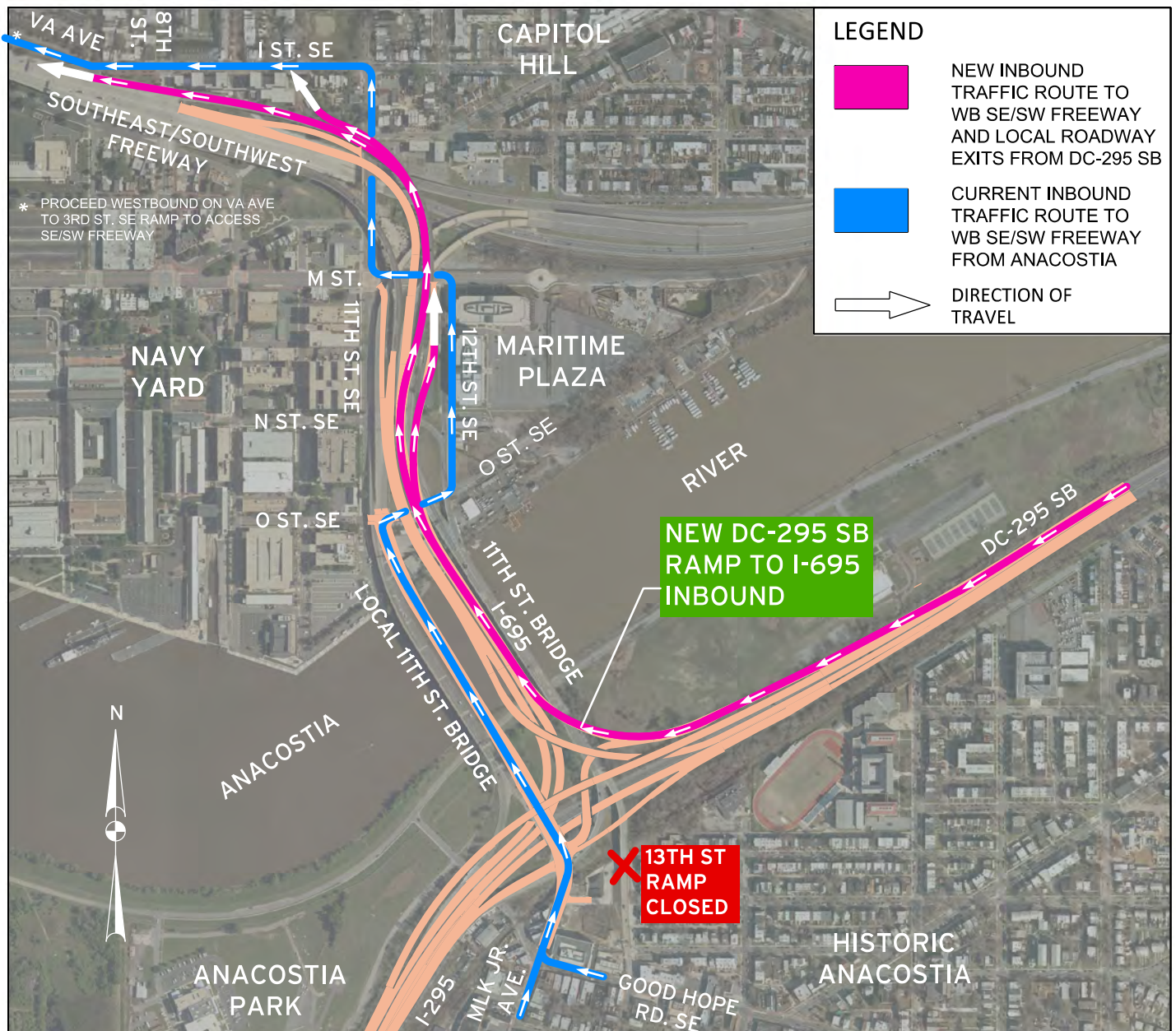


NEW INBOUND TRAFFIC ROUTING FROM DC-295 SOUTHBOUND

THE 11TH STREET BRIDGE PROJECT WILL BE COMPLETING AND OPENING A NEW RAMP THAT WILL AFFECT TRAFFIC PATTERNS FOR BOTH LOCAL AND COMMUTER TRAFFIC CROSSING THE ANACOSTIA RIVER FROM DC 295 AND HISTORIC ANACOSTIA.

THE NEW DC 295 SOUTHBOUND OFF-RAMP TO THE INBOUND 11TH STREET FREEWAY BRIDGE (I-695 WB) WILL OPEN ON OR ABOUT JULY 30TH (SEE MAP BELOW FOR DETAILS). THE NEW RAMP IS EXPECTED TO REDUCE MORNING RUSH HOUR CONGESTION IN HISTORIC ANACOSTIA.



For More Information

Visit <http://www.anacostiawaterfront.org/11thStreetBridge> , call 202-741-8528 or email ddot.awi@dc.gov

