

Metropolitan Police Department  
Office of Property Management

# MPD's Move to Near Southeast

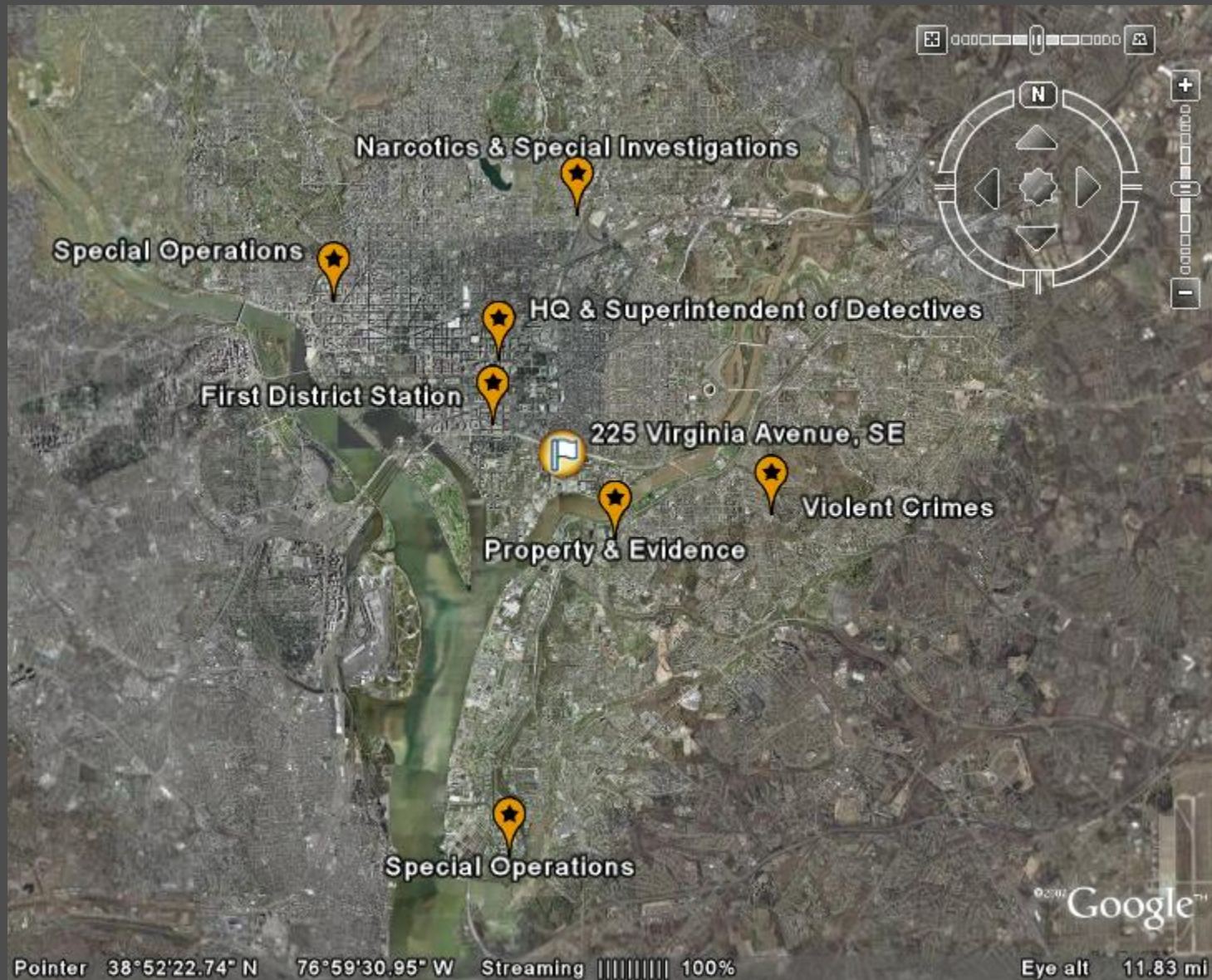


225 Virginia Avenue, SE

July 18, 2007



# Locations of MPD Facilities



# MPD Units

- ❑ Superintendent of Detectives - Oversees and manages caseload and evidence
- ❑ Violent Crimes - Responds to and investigates crimes of a violent nature
- ❑ Narcotics & Special Investigations – Investigates drug-related crimes and prostitution
- ❑ Special Operations – Oversees emergency response and tactical missions, special events and motorcades, air support, harbor patrol, and executive protection
- ❑ Property & Evidence – Collects and catalogues evidence and property from crime scenes
- ❑ First District – Provides police services to neighborhoods

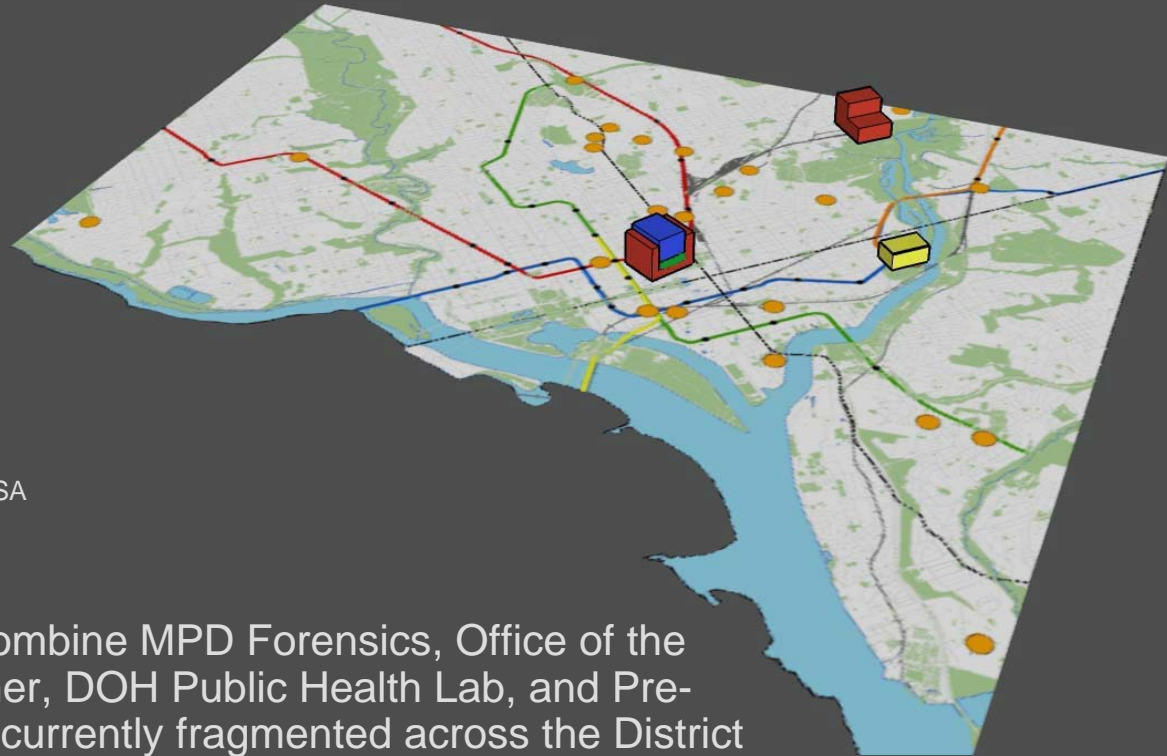
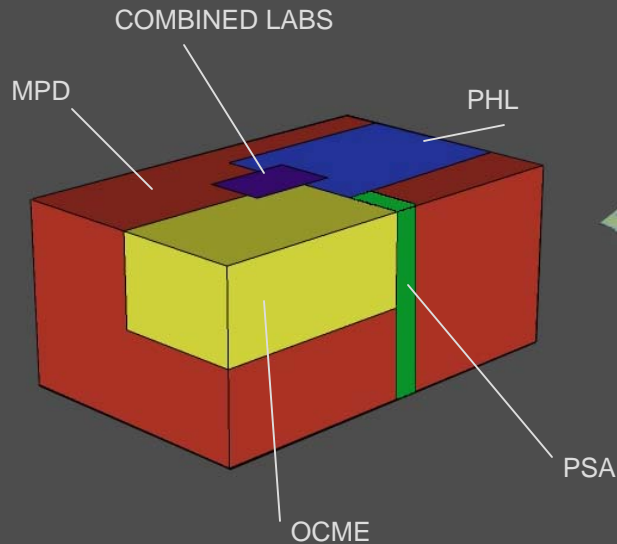


# MPD Needs and Facility Issues

- Consolidate MPD operations for greater efficiency
- Upgrade evidence security and control
- Relocate units as leases expire
- Address overcrowding in Daly Building
- Improve condition of MPD space
- Relocate First District Station for Consolidated Forensic Lab Facility



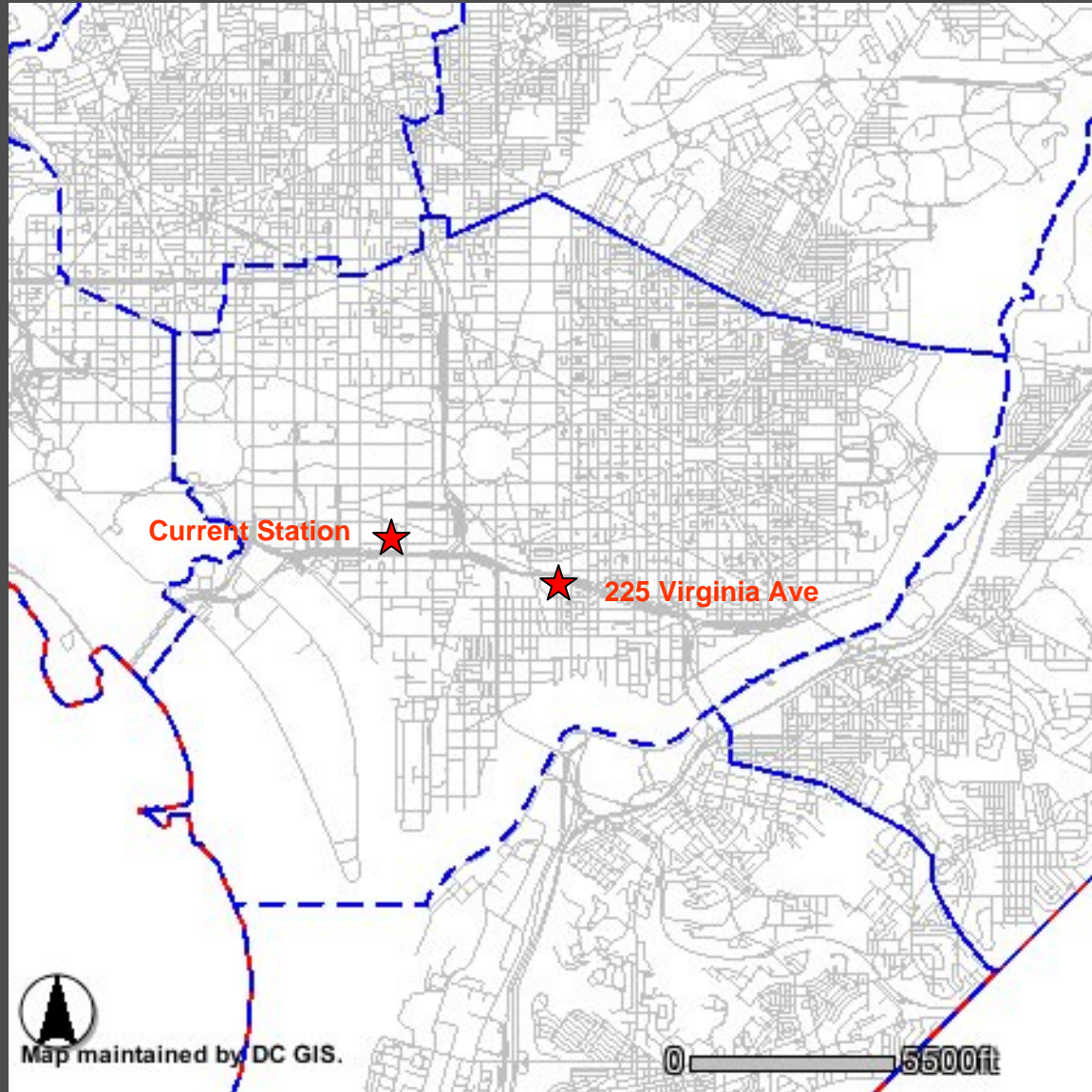
# Benefits of Consolidated Forensic Lab Facility



- The new facility will combine MPD Forensics, Office of the Chief Medical Examiner, DOH Public Health Lab, and Pre-trial Services Agency currently fragmented across the District
- Faster DNA processing – no need to go to FBI
- Meets Public Safety Needs:
  - Quicker case closures
  - Aids USAO and OAG in prosecutions
  - Cuts down on response times for public health emergencies



# MPD First District



Map maintained by DC GIS.

0 5500ft

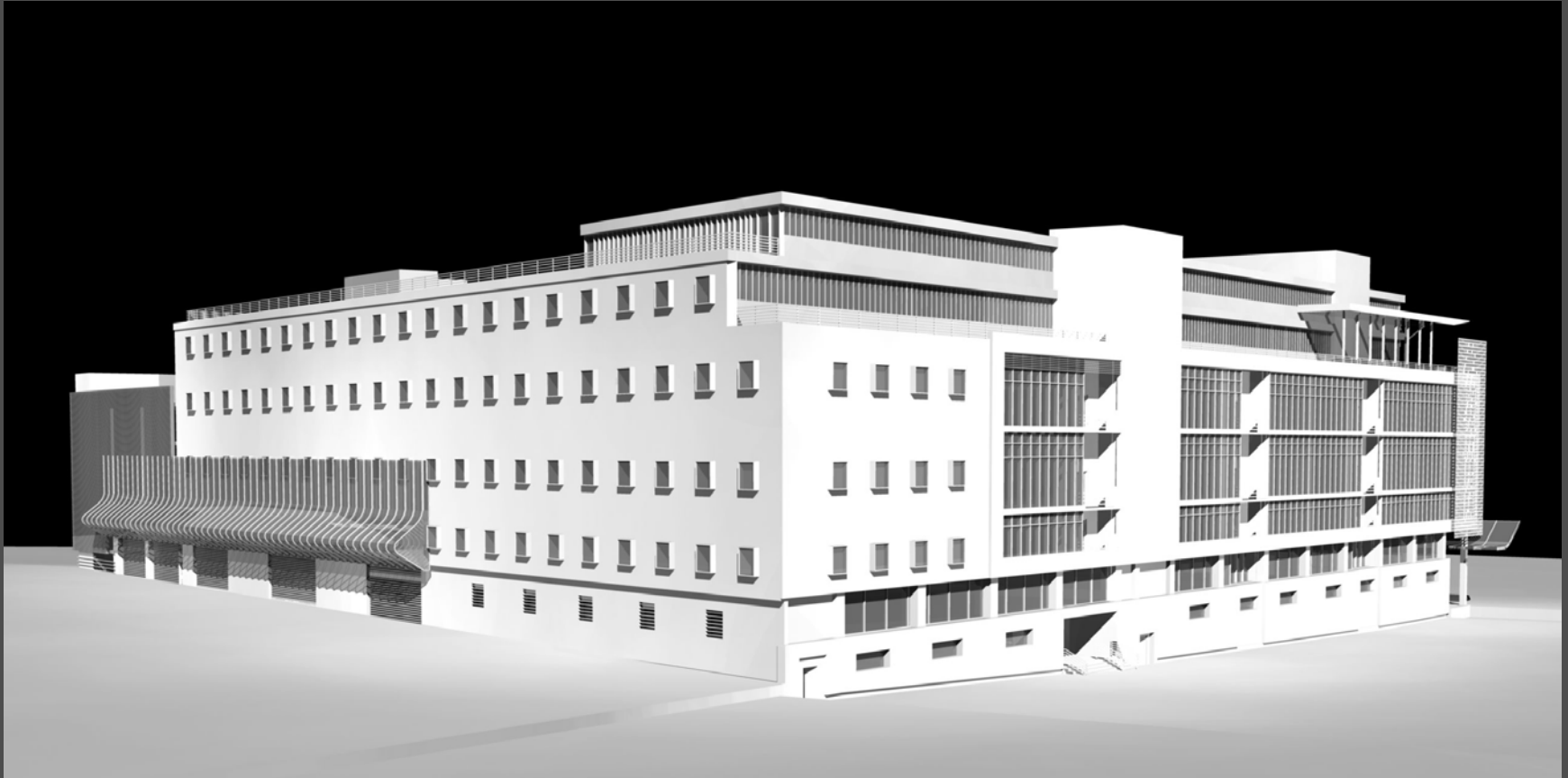


# 225 Virginia Avenue, SE

- ❑ Uniquely large, vacant, flex building suitable for MPD operational needs
- ❑ Close to Downtown, MPD HQ, and the Courts
- ❑ Transportation:
  - Four blocks from Navy Yard Metrorail station
  - Immediate access to the SE/SW Freeway



# Conceptual Building Facade at 2<sup>nd</sup> Street and Virginia Avenue





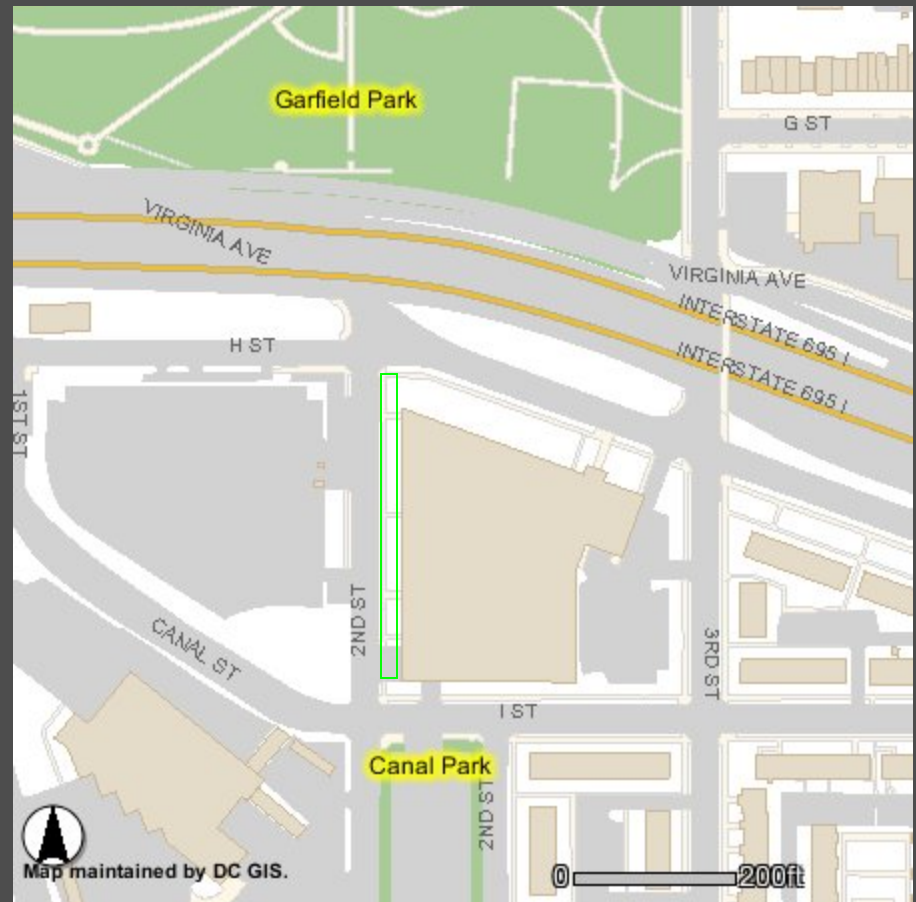
# Parking

- ❑ Need 648 parking spaces for current program
- ❑ Parking provided on-site or on District-controlled property
  - 460 garage spaces
  - 80 adjacent street spaces
  - 108 surface spaces on DPW site



# Green Space Connection

- ❑ 2<sup>nd</sup> Street loading dock removed
- ❑ Building setback landscaped



# Schedule

