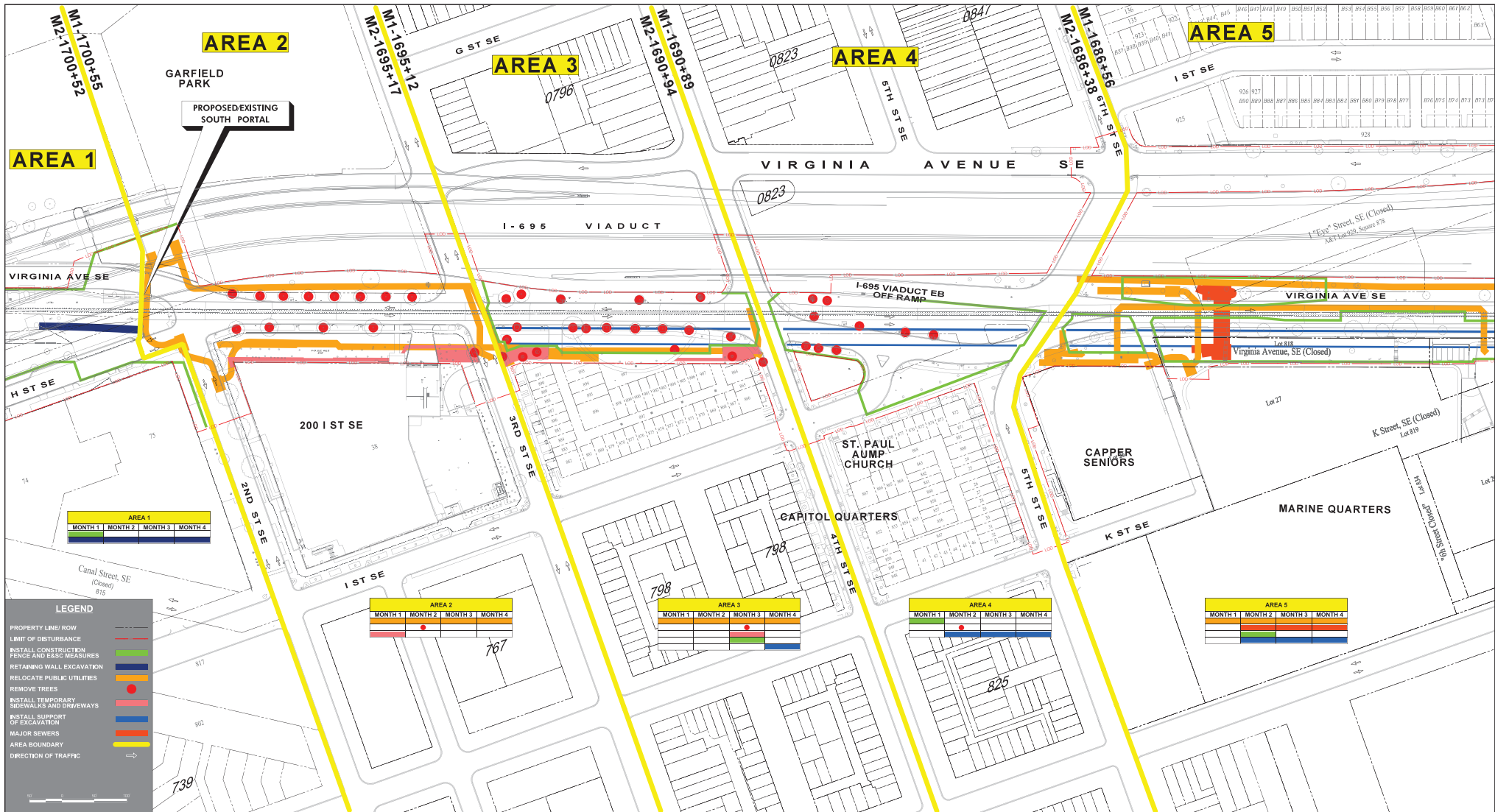


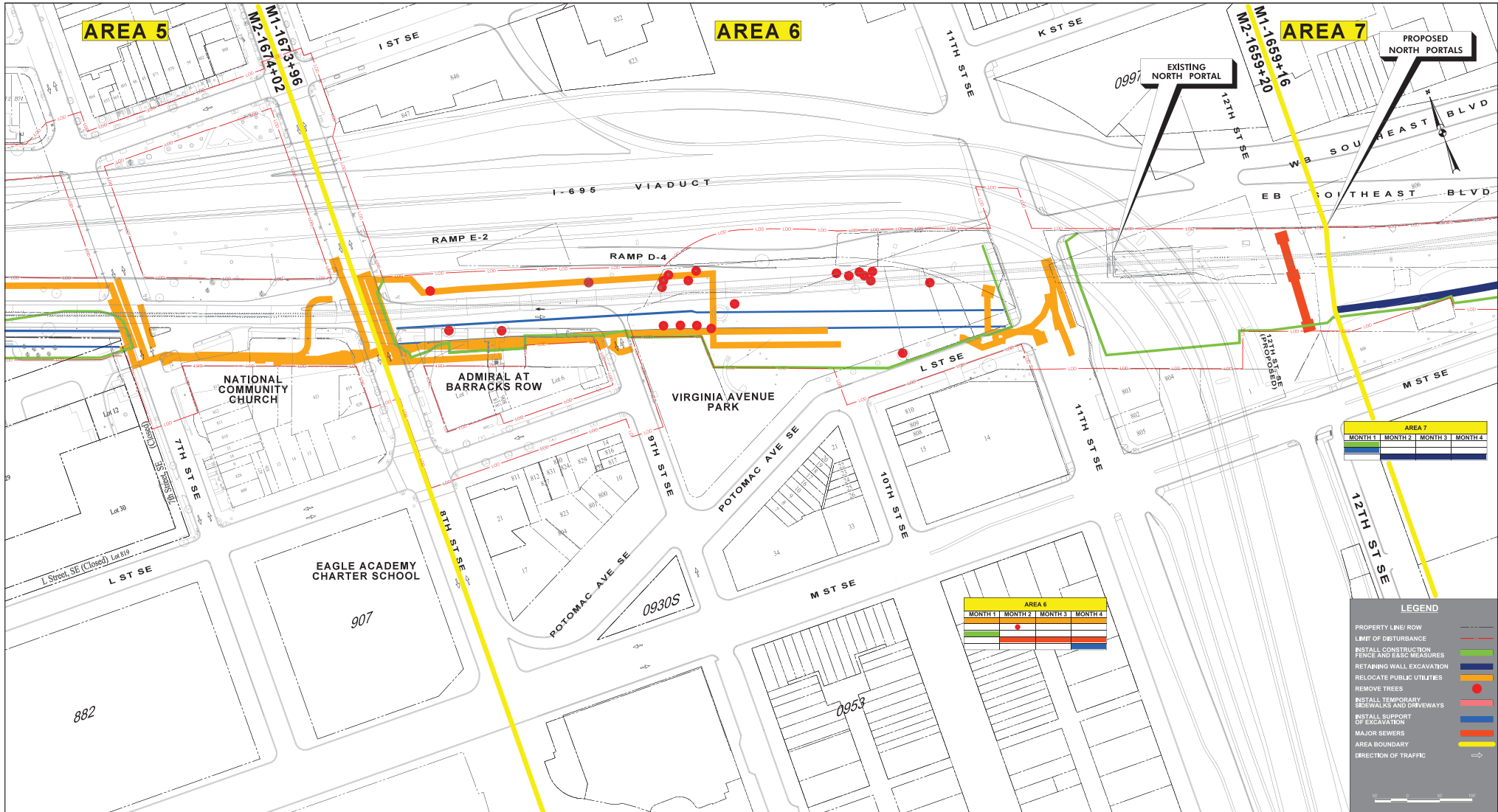
# Virginia Avenue Tunnel Reconstruction

## First 120-Day Planned Construction Activities South Portal to 6<sup>th</sup> Street



# Virginia Avenue Tunnel Reconstruction

## First 120-Day Planned Construction Activities 7<sup>th</sup> Street to North Portal

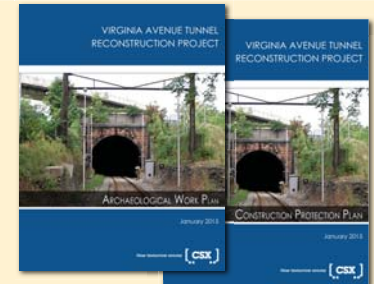


# Virginia Avenue Tunnel Reconstruction

## Section 106 Compliance Historic and Archaeological Resources

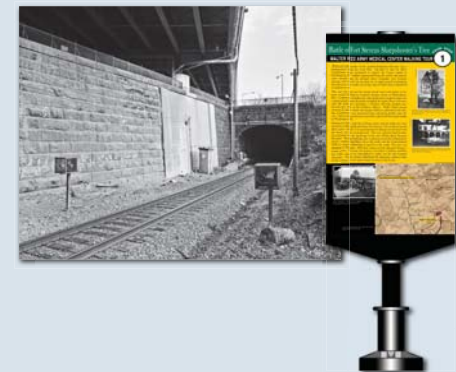
The **Section 106 Memorandum of Agreement (MOA)** was drafted to help protect historic and archeological resources in the project area.

- The stipulations within the MOA required the preparation of an **Archaeological Work Plan** and **Construction Protection Plan** to provide guidance for the protection of the area's resources.



The MOA also provided for several other protective and recordation measures for historic and archeological resources including:

- **Photo-Documentation and Recordation** packages be prepared in accordance with the requirements of the Historic American Engineering Record Survey
- Creation of **Interpretive Signs** for the historic Virginia Avenue Tunnel and the historic paving stones used for the original Virginia Avenue itself
- Reuse of the **Tunnel's Portal Stones** and the original **Virginia Avenue Paving Stones**
- Restoration of the **Control Point Virginia Tower**, and
- Establishment of a **Preservation Fund** for local historic resources



# Virginia Avenue Tunnel Reconstruction

## Air Monitoring Locations During Construction Activities



- Four fixed air monitoring locations will be capable of monitoring and sampling for markers which indicate potential emissions from the site as well as background conditions.
- Additional monitors (up to 8) will be placed during specific activities as described in the air monitoring plan.
- Real time text and email alerts to construction personnel will ensure prompt response to conditions before they exceed relevant criteria.

# Virginia Avenue Tunnel Reconstruction

## Beyond Our Rails | CSX and It's Communities

**CSX BEYOND OUR  
RAILS**

Beyond Our Rails is a program encompassing the actions of CSX and its employees to generate a positive influence within the communities where we live and work.



## CSX Claims Process

The CSX team is committed to limiting construction impacts from the Virginia Avenue Tunnel project. Residents may still need to make a claim for property damage they believe is caused by the project. CSX has a straightforward process for managing claims.

### Where can I file a claim?

To make an initial report:

- Call (800) 494-1049
- Submit request via [www.virginiaavenuetunnel.com](http://www.virginiaavenuetunnel.com)
- Visit CSX's Virginia Avenue Tunnel Community Office at 861 New Jersey Avenue, S.E.

### What is the claims process?

- Make an initial report.
- A claims investigator will contact you to gather more information.
- A thorough investigation will be completed, which will take some time. The investigator will keep you informed of progress.
- We will work as quickly as possible to address your claim.

### What information do I need?

Some documents may be needed to support your claim:

- Pre-construction inspection report (for claims related to residences); inspections available from CSX
- Proof of property ownership and insurance
- Two estimates of repair costs or paid receipts
- Photos of damaged property/site of incident
- Any witness statements

### Who can I speak to if I have more questions?

A CSX representative is available at the CSX Virginia Avenue Tunnel Community Office during posted times. You can also call us at (800) 494-1049 or submit a request through [www.virginiaavenuetunnel.com/contact](http://www.virginiaavenuetunnel.com/contact).

## Emergency Plans & Response

Safety is CSX's highest priority. Our goal is zero accidents in all operations and projects. Accident prevention is the first objective of the project's safety plan. CSX also invests extensively to protect the public's safety in the event an incident does occur. Should an incident occur, we believe in providing a meaningful Standard of Care that anticipates the needs of people and communities, focuses on their safety, restores their lives and protects the environment.

### Emergency Plans

In the event of an emergency, CSX and our construction contractor have extensive response plans that will be implemented to protect workers and the public. Response plans include:

- Site tours and briefings with DC emergency agencies
- Immediate coordination with DC emergency agencies
- Site evacuation and security procedures
- Immediate activation of railroad emergency response procedures in the event of an incident involving a train

### CSX Standard of Care Program

CSX is prepared to meaningfully address the critical health care, business and communication needs of our communities and employees in the event of an incident. Our program is based on best practices and the highest standards of service.

- Focused on the needs of people, families and communities
- Empowered through communication and collaboration with responders
- Conveyed with sincerity and empathy until community is restored.





## Pre- and Post-Construction Inspections

CSX will provide pre- and post-construction inspections of homes and properties in the neighborhood around the Virginia Avenue Tunnel. These inspections will document the current interior and exterior condition of your property and help expedite processing any future claims if you believe your property is damaged. CSX's intent is to protect your interests and ensure that our construction project does not cause any damage to your home or property. Inspections will be conducted by CED Technologies, a leading U.S. civil engineering firm.

### Pre-Construction Inspection Process

- Sign up today or contact CSX via phone, web or email to request information.
- A Project Representative will contact you to schedule an appointment
- CED will inspect, photograph and document the interior and exterior condition of your property.
- Inspections take 60 to 90 minutes.
- Inspections will be conducted between February 16 and March 13, 2015.
- Appointments will be made Monday to Friday within a 4-hour time block:
  - 8am - Noon
  - Noon - 4pm
  - 4pm - 8pm (Monday – Thursday only)
- Post-construction inspections will be scheduled and completed at the end of the project.

## Residential & Community Mitigation Plans

CSX is implementing mitigation plans to reduce the impact and offset some of the inconveniences the Virginia Avenue Tunnel project may cause to the neighborhood.

### Residential Mitigation Plan

The Residential Mitigation Plan is provided to residents who live next to major construction (“Front Row”).

- Direct payment of \$500 per month for 42 months
- Up to \$75,000 to offset the sale price required to market home in needed timeframe
- A \$250,000 grant to the Arthur Capper Senior Center to help offset construction inconveniences and provide community enhancements for the residents



### Community Mitigation Plan

The Community Mitigation Plan provides:

- A \$650,000 community fund to enhance the neighborhood and offset inconveniences.
- Community enhancements:
  - Improved lighting, traffic signals and crosswalks
  - Improved wheelchair access and connection to Garfield Park
  - More green space
  - Wider sidewalks
  - New bike path
  - New dog park
- A CSX Community Office where residents can ask questions and raise concerns.



# Virginia Avenue Tunnel Reconstruction

## Noise and Vibration Monitoring Locations



- Sixteen (16) fixed monitoring locations (8 noise and 8 vibration) will provide continuous noise and vibration data during construction activities. Two (2) weeks of ambient condition monitoring will establish baseline prior to start of construction.
- Real time text and email alerts to construction personnel will ensure prompt response to conditions before they exceed relevant criteria.

## Safety is a Way of Life

Safety is CSX's highest priority. Guided by a policy to ensure the safety of our employees, our customers and the communities we serve, CSX works relentlessly to prevent injuries and accidents. The CSX team is committed to safety on the Virginia Avenue Tunnel project and will implement extensive efforts to ensure the safety of project workers and the surrounding community.

### CSX Safety Facts

- CSX was the safest Class 1 railroad in America in 2012 and 2013 according to the Federal Railroad Administration
- CSX has reduced accidents by 58% since 2004
- In the last 10 years, over 200 construction projects have occurred near active CSX rail lines in DC with zero rail-related incidents.

### Train Operations During Construction

- All trains will operate in enclosed tunnels in front of residences during construction.
- "Railroad Employee In Charge" will control all train movements through site.
  - Each train requires explicit permission to enter site; permission granted only when site is confirmed safe for passage of trains
  - All train crews receive alerts explaining restrictions; dedicated radio channels used for communication; additional track-side signs alert crews to control zone
  - All operations conducted in accordance with Federal Railroad Administration rules and requirements

### Ensuring Site Safety

- All workers receive site-specific safety briefing before being allowed access
- All trackside workers required to pass "Roadway Worker Protection Training" program annually
- Onsite Safety Officer required during any construction
- 8-foot perimeter fencing, security lighting and regular CSX Police patrols to protect public and workers
- Tunnel safety will be monitored through extensive camera and electronic security systems

# Virginia Avenue Tunnel Reconstruction

## First 120-Day Planned Construction Activities

WORK AREA	ACTIVITY DESCRIPTION	2015			
		MONTH 1	MONTH 2	MONTH 3	MONTH 4
AREA 1	Install Construction Fence and Erosion and Sedimentation Control (E&SC) Measures	█			
	Excavate West Retaining Wall and Install Pile Caps		█	█	█
AREA 2	Relocate Public Utilities	█	█	█	█
	Remove Trees along Virginia Avenue		█		
	Install Temporary Sidewalk around 200 I Steet	█			
AREA 3	Relocate Public Utilities	█	█	█	█
	Install Temporary Sidewalks and Driveways			█	█
	Remove Trees along Virginia Avenue			█	█
	Install Construction Fence and E&SC Measures			█	█
	Install Support of Excavation for Phase 1 Tunnel				█
AREA 4	Install Construction Fence and E&SC Measures	█			
	Remove Trees along Virginia Avenue		█		
	Install Support of Excavation for Phase 1 Tunnel		█	█	█
AREA 5	Relocate Public Utilities	█	█	█	█
	Install 6 <sup>th</sup> Street Siphon			█	█
	Reduce Lanes of Virginia Avenue between 5 <sup>th</sup> Street and 7 <sup>th</sup> Street			█	█
	Install Support of Excavation for Phase 1 Tunnel			█	█
AREA 6	Relocate Public Utilities	█	█	█	█
	Remove Trees along Virginia Avenue		█		
	Install Construction Fence and E&SC Measures Virginia Avenue Park	█			
	Install 12 <sup>th</sup> Street Sewer		█	█	█
	Install Support of Excavation at 11 <sup>th</sup> Street for Phase 1 Tunnel				█
AREA 7	Install Construction Fence and E&SC Measures	█			
	Clear / Grade Area	█			
	Install Support of Excavation for Retaining Wall	█			
	Excavate / Build East Retaining Wall		█	█	█

Permits Obtained

Permits Obtained